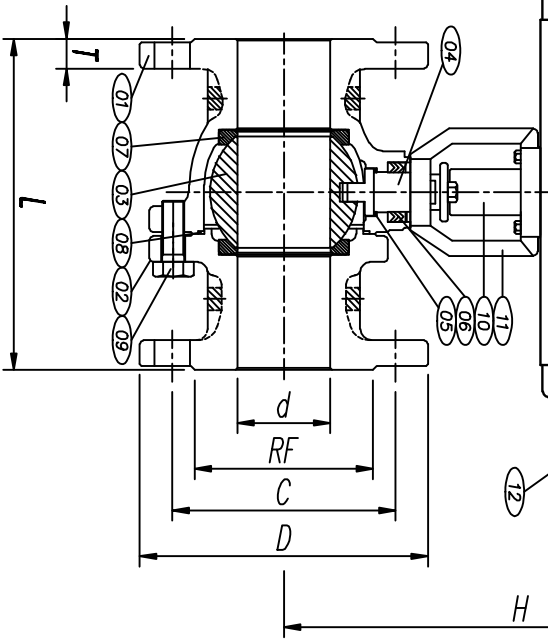
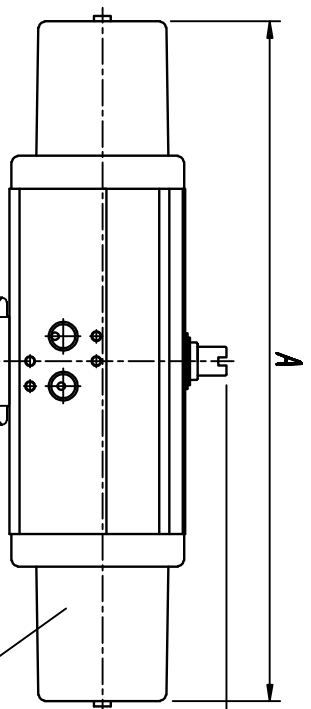
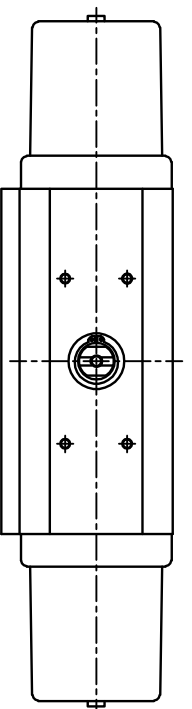
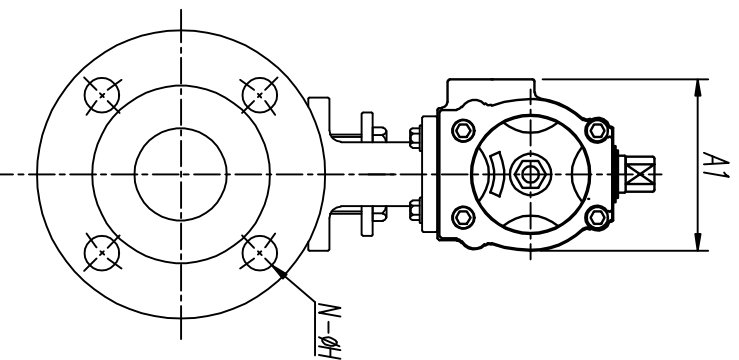
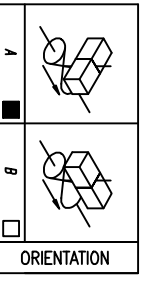
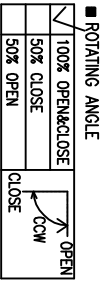


06-1
FOR APPROVAL



NO.	PART NAME	QTY	MATERIAL	REMARK
1	BODY	1	SCS13	
2	BONNET	1	SCS13	
3	BALL	1	SUS304	
4	STEM	1	SUS304	
5	BACK SEAT	1	PTFE	
6	PACKING	1SET	PTFE	
7	SEAT RING	2	PTFE	
8	GASKET	1	PTFE	
9	BONNET BOLT	1SET	A193-B7	
10	JOINT	1	A 351 CF8	
11	BRACKET	1	A 351 CF8	
12	ACTUATOR	1	TS	
13				KOREAW
14				
15				

TAG NO.



Rev.	Date	Description	Pre.d	Che.d	App.d

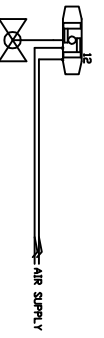
Designed by _____ Checked by _____ Approved by _____

FLANGE BALL VALVE

Model	TS50-15F ~ TS80-50F
Drawing no.	A110214-01-06
Size	A4
Scale	N:S
Unit	mm



INSTALLATION SCHEMATIC



12. PNEUMATIC ACTUATOR

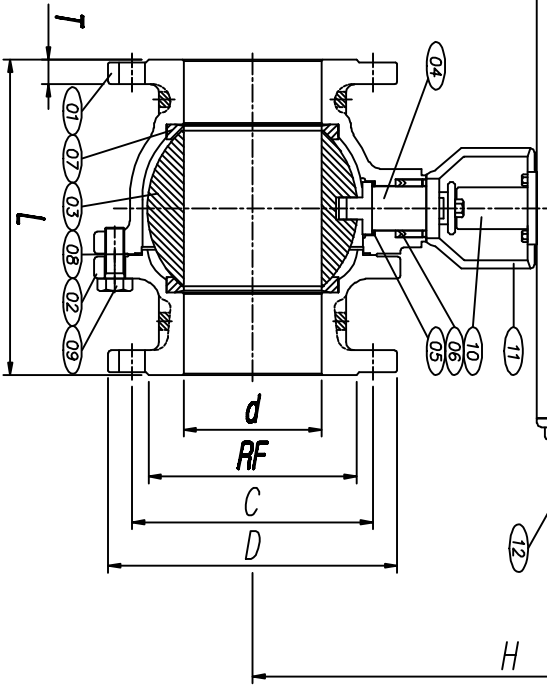
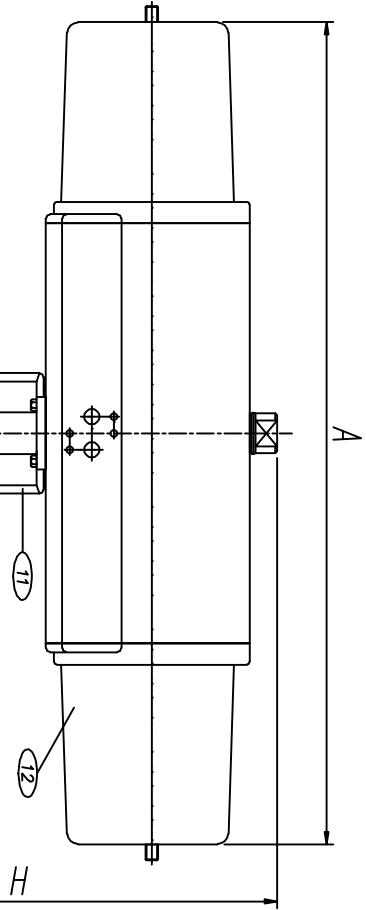
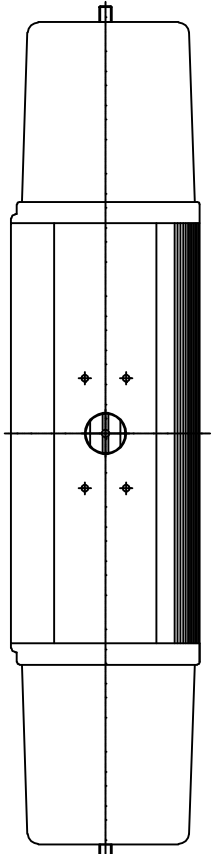
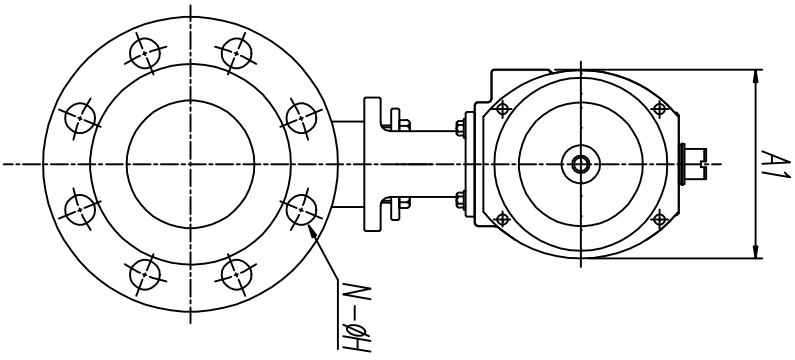
■ DIMENSION

MODEL	QTY	ACTUATOR	H (APPROX.)	L±1.6	END CONNECTION						0 (MAINT-ENCE)	± (MIN WALL THICKNESS)	WEIGHT (APPROX.)
		A	A1		T	d	RF	C	D	N-H			
TS80-50F	-	386	99	239	178	16	50	100	120	155	4-19	-	-
TS65-40F	-	329	83	237	165	16	40	85	105	140	4-19	-	-
TS65-32F	-	329	83	216	140	16	32	80	100	135	4-19	-	-
TS65-25F	-	329	83	213	127	14	25	70	90	125	4-19	-	-
TS50-20F	-	268	73	185	117	14	20	58	75	100	4-15	-	-
TS50-15F	-	268	73	182	108	12	15	52	70	95	4-15	-	-

JIS 10K RF(mm)

06-2

FOR APPROVAL



■ DIMENSION JIS 10K RF(mm)

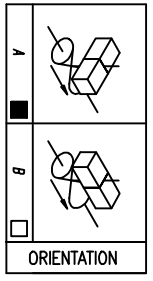
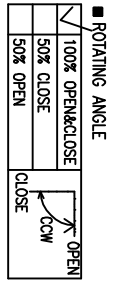
MODEL	QTY	ACTUATOR		H (APPROX.)	L±1.6	END CONNECTION						O (MINI-T ENCE)	+ (MIN WALL THICKNESS)	WEIGHT (APPROX.)
		A	A1			T	d	RF	C	D	N-H			
TS160-150F	-	790	178	500	394	22	150	215	240	280	8-23	-	-	-
TS140-125F	-	700	158	450	356	20	125	185	210	250	8-23	-	-	-
TS125-100F	-	597	138	368	229	18	100	155	175	210	8-19	-	-	-
TS100-80F	-	480	118	333	203	18	80	130	150	185	8-19	-	-	-
TS80-65F	-	386	99	268	190	18	65	120	140	175	4-19	-	-	-

■ INSTALLATION SCHEMATIC



NO.	PART NAME	QTY	MATERIAL	REMARK
1	BODY	1	SCS13	
2	BONNET	1	SCS13	
3	BALL	1	SUS304	
4	STEM	1	SUS304	
5	BACK SEAT	1	PTFE	
6	PACKING	1SET	PTFE	
7	SEAT RING	2	PTFE	
8	GASKET	1	PTFE	
9	BONNET BOLT	1SET	A193-B7	
10	JOINT	1	A 351 CF8	
11	BRACKET	1	A 351 CF8	
12	ACTUATOR	1	TS	KOREAW
13				
14				
15				

TAG NO.



Rev.	Date	Description	Pre-d	Che-d	App-d

Designed by _____ Checked by _____ Approved by _____

CL, KM

FLANGE BALL VALVE

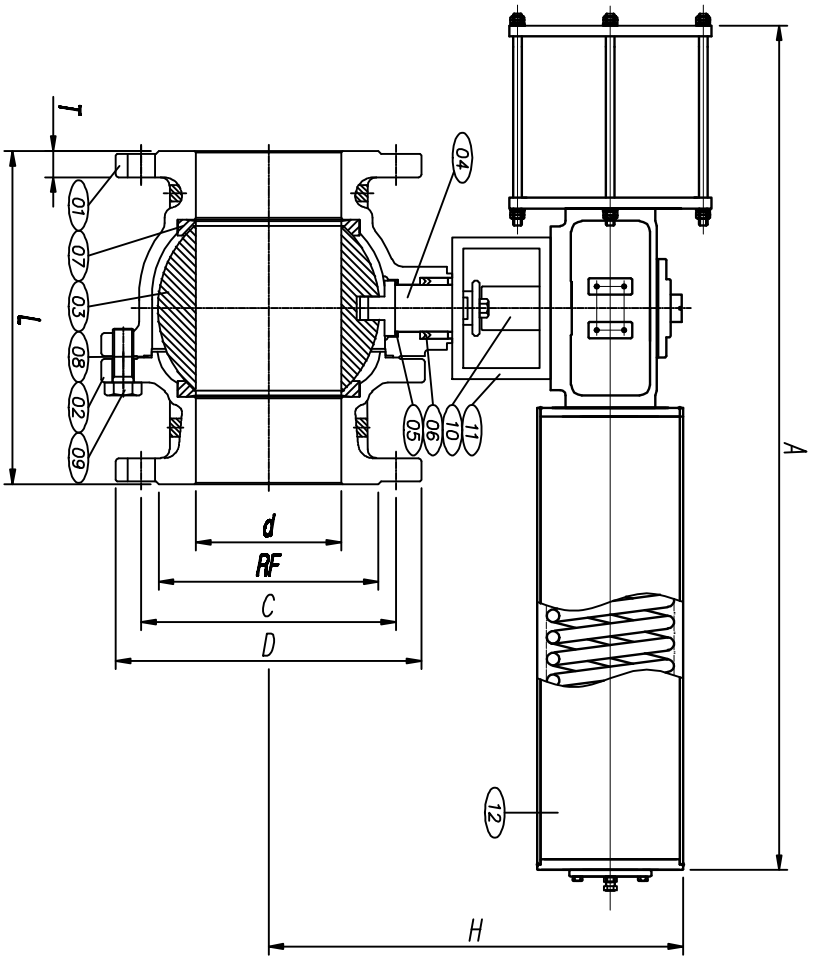
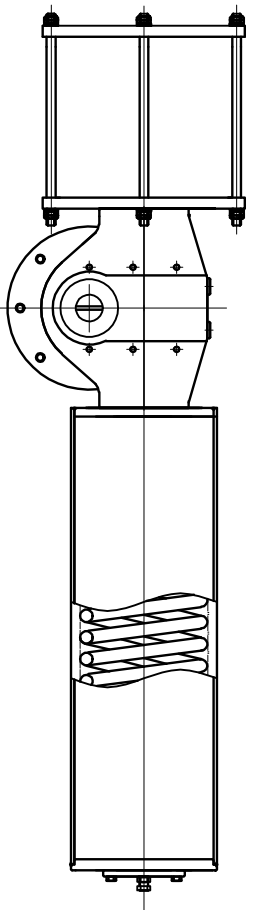
Model TS80-65F ~ TS160-150F

Drawing no.	Size	Scale	Unit
A110214-01-06	A4	N:S	mm



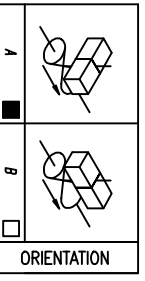
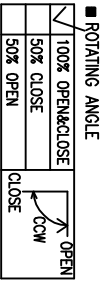
06-3

FOR APPROVAL



NO.	PART NAME	QTY	MATERIAL	REMARK
1	BODY	1	SCS13	
2	BONNET	1	SCS13	
3	BALL	1	SUS304	
4	STEM	1	SUS304	
5	BACK SEAT	1	PTFE	
6	PACKING	1SET	PTFE	
7	SEAT RING	2	PTFE	
8	GASKET	1	PTFE	
9	BONNET BOLT	1SET	A193-B7	
10	JOINT	1	A 351 CF8	
11	BRACKET	1	A 351 CF8	
12	ACTUATOR	1	TS250D, TS300D	KOREAW
13				
14				
15				

TAG NO.



Rev.	Date	Description	Pre.d	Che.d	App.d

Designed by _____ Checked by _____ Approved by _____

CL. KM

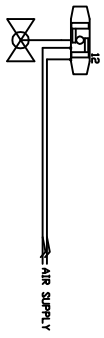
FLANGE BALL VALVE

Model TS250D-200F ~ TS300D-250F

Drawing no. A110214-01-06 Size A4 Scale N:S Unit mm



■ INSTALLATION SCHEMATIC



12. PNEUMATIC ACTUATOR

■ DIMANSION

MODEL	QTY	ACTUATOR	H (APPROX.)	L±1.6	T	d	RF	C	D	N-H	Q	(MINI-ENGE)	(MIN WALL THICKNESS)	WEIGHT (APPROX.)
TS300D-250F	-	1598	370	-	533	24	250	325	355	400	12-25	-	-	-
TS250D-200F	-	1376	325	-	457	22	200	265	290	330	12-23	-	-	-

JIS 10K RF(mm)

6
5
4
3
2
1

A B C D E F G H