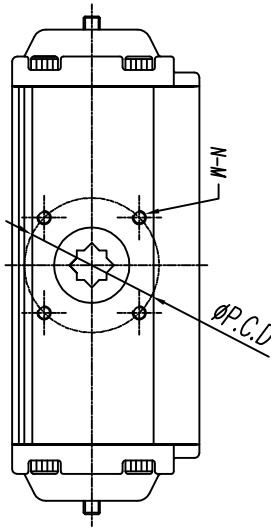
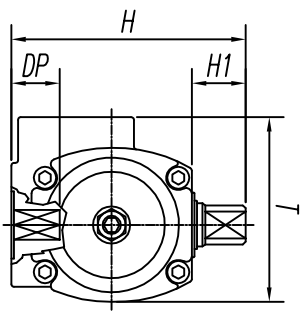
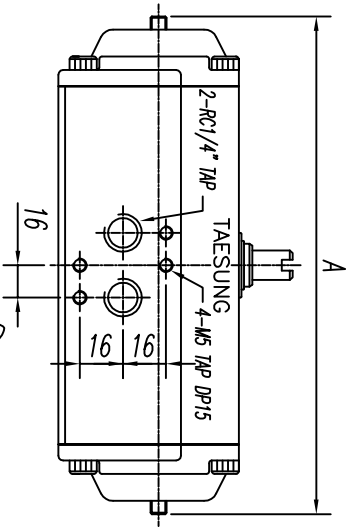
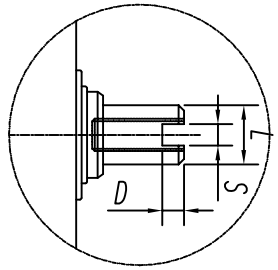
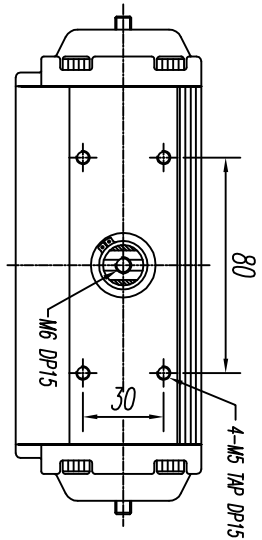


1-1

FOR APPROVAL



BOTTOM VIEW-ISO-5211

■ DIMENSION(mm)

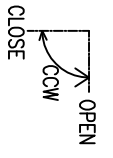
VALVE	BUTTERFLY	MODEL	A	T	L	S	D	N-M	P.C.D(φ)	H1	H	K	DP
15A-25A	40A-65A	TD50	178	60	10	4	4	M5	36	20	74	9X9	12
32A-50A	80A-100A	TD65	232	69	13	4	4	M6	50	20	87	11X11	16
65A-80A	125A-150A	TD80	260	82	13	4	4	M6/M8	50/70	20	106	14X14	17
100A	200A	TD100	326	98	13	4	4	M8	70	20	123	17X17	22
125A	250A~300A	TD125	435	114	22	4	4	M8/M10	70/102	20	143	22X22	28
150A	350A	TD140	462	130	22	4	4	M8/M10	70/102	20	170	22X22	28
				158	22	4	4	M10/M12	102/125	20	180	27X27	35

TITLE
DOUBLE ACTING
ACTUATOR

NO	DESCRIPTION	MATERIAL
1	BODY	AL6063
2	PISTON	ADC12
3	COVER	ADC12
4	SHAFT	SM45C
5	BOTTOM O-RING	NBR
6	BOTTOM RING	PTFE
7	PISTON O-RING	NBR
8	PISTON GUIDE RING	PTFE
9	PISTON GUIDE PAD	PBT
10	SHAFT GUIDE RING	PTFE
11	TOP O-RING	NBR
12	TOP GUIDE RING	PTFE
13	THRUST WASHER	PTFE
14	SNAP RING	SM45C
15	COVER O-RING	NBR
16	COVER BOLT	304SS
17	ADJUST O-RING	NBR
18	ADJUST WASHER	304SS
19	ADJUST O-RING	304SS
20	ADJUST NUT	304SS

■ ROTATING ANGLE

<input checked="" type="checkbox"/>	100% OPEN&CLOSE
<input type="checkbox"/>	50% CLOSE
<input type="checkbox"/>	50% OPEN

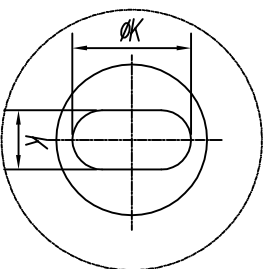
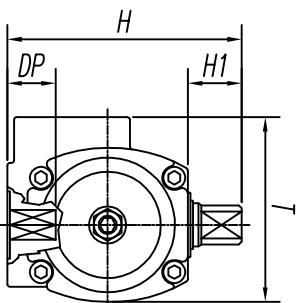
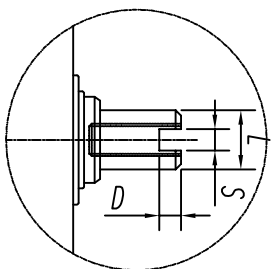
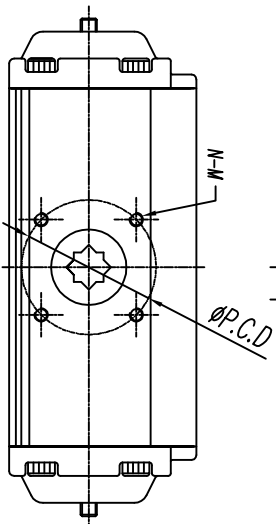
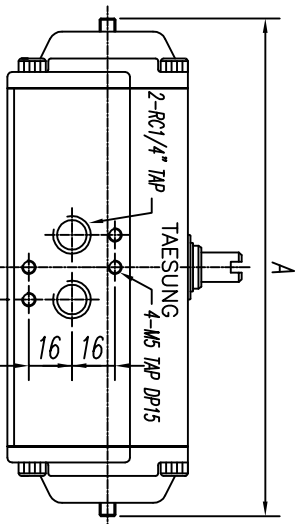
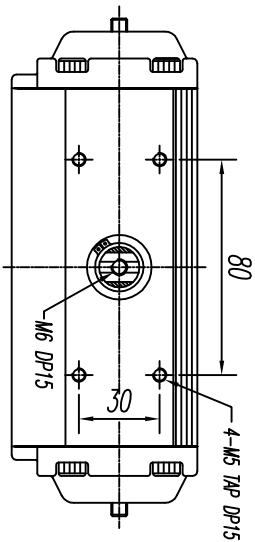


■ Actuator Specification

Specification	Type	DOUBLE ACTING
Operating Medium	Compressed dry air	
Standard operating pressure	5kg/cm ²	
Operating pressure range	4 ~ 7kg/cm ²	
Operating angle	90° (0°~+5°)	
Operating time (close → open)	Maximum 30 Second / Speed controller	
Service temperature	-20°C ~ +65°C (Option : 250°)	
Operating Type	Sech - Valve (AD40 / Rd4)	
Designed by	File name	
Checked by	Date	
Approved by	Scale	
PARK D. G	TD	2009.05.04
		N:S
		Unit
		mm
Title TD40 ~ TD140		
Model	Drawing no.	
TD-PNEUMATIC-ACTUATOR	TS090504-22	

1-2

FOR APPROVAL

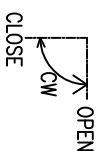


TITLE
DOUBLE ACTING
ACTUATOR

NO	DESCRIPTION	MATERIAL
1	BODY	AL6063
2	PISTON	ADC12
3	COVER	ADC12
4	SHAFT	SM45C
5	BOTTOM O-RING	NBR
6	BOTTOM RING	PTFE
7	PISTON O-RING	NBR
8	PISTON GUIDE RING	PTFE
9	PISTON GUIDE PAD	PBT
10	SHAFT GUIDE RING	PTFE
11	TOP O-RING	NBR
12	TOP GUIDE RING	PTFE
13	THRUST WASHER	PTFE
14	SNAP RING	SM45C
15	COVER O-RING	NBR
16	COVER BOLT	304SS
17	ADJUST O-RING	NBR
18	ADJUST WASHER	304SS
19	ADJUST O-RING	304SS
20	ADJUST NUT	304SS

■ ROTATING ANGLE

<input checked="" type="checkbox"/>	100% OPEN&CLOSE
<input type="checkbox"/>	50% CLOSE
<input type="checkbox"/>	50% OPEN



■ DIMENSION(mm)

VALVE	BUTTERFLY	MODEL	A	T	L	S	D	N-M	P.C.D(φ)	H1	H	ØK - k	DP
15A-25A	40A-65A	TD50	178	69	13	4	4	M6	50	20	87	Ø14-9.7	13
32A-50A	80A-100A	TD65	232	82	13	4	4	M6/M8	50/70	20	106	Ø16.5-9.7/11.7	17
65A-80A	125A-150A	TD80	260	98	13	4	4	M8	70	20	123	Ø19.5-14.7	22
100A	200A	TD100	326	114	22	4	4	M8/M10	70/102	20	143	Ø22-17.7/19.7	28
125A	250A~300A	TD125	435	130	22	4	4	M8/M10	70/102	20	170	Ø22 x 22	28
150A	350A	TD140	462	158	22	4	4	M10/M12	102/125	20	180	Ø27 x 27	35

■ Actuator Specification

Specification	Type	DOUBLE ACTING
Operating Medium	Compressed dry air	
Standard operating pressure	5kg/cm ²	
Operating pressure range	4 ~ 7kg/cm ²	
Operating angle	90° (0°~+5°)	
Operating time (close → open)	Maximum 30 Second / Speed controller	
Service temperature	-20°C ~ +65°C (Option : 250°)	
Operating Type	Such - Valve (ADA0 / RA0)	
Designed by	Checked by	Approved by
PARK D. G		
File name	Date	Scale
TD	2009.05.04	N:S
Unit		mm



Title TD50 ~ TD140(BUTTERFLY VALVE)
Model TD-PNEUMATIC-ACTUATOR
Drawing no. TS090504-23