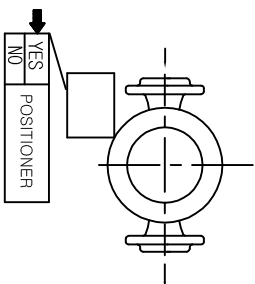
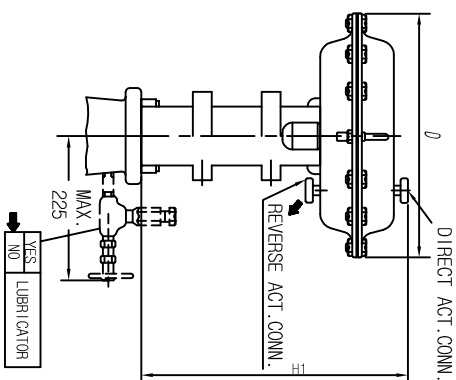
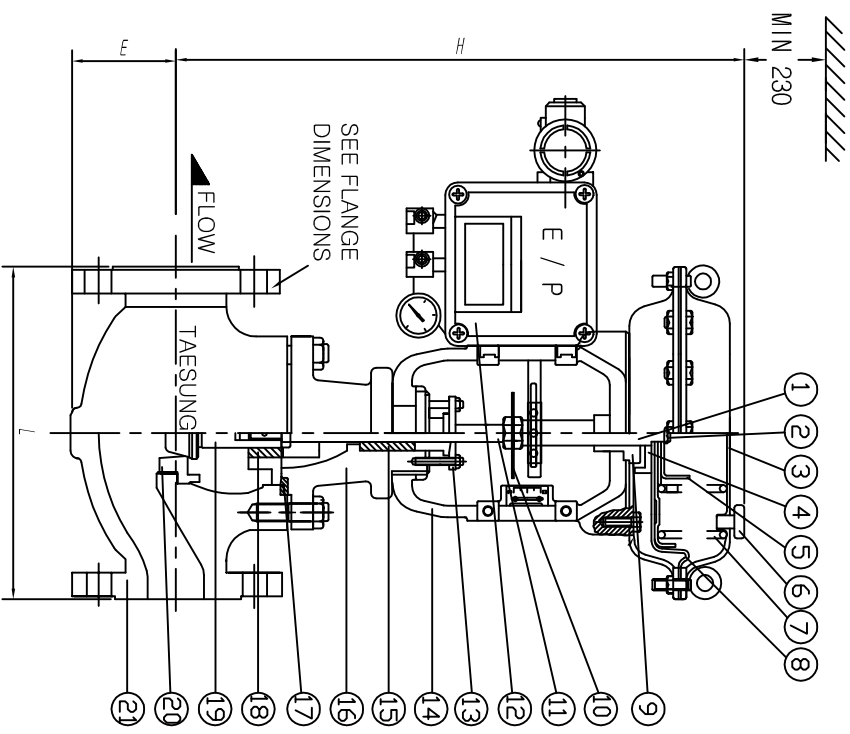


33

# 1. AIR FAILURE VALVE

FOR APPROVAL



STANDARD MOUNTING POSITION

# 3. PART NAME

21	BODY	SCPH2
20	TREM	SUS316
19	PLUG	SUS316
18	GUIDE BUSHING	SUS420J2
17	GASKET	S.W.G
16	BONNET	SCS 13
15	PACKING	C#285
14	YOKE	FC20
13	PACKING FLANGE	SS41
12	POSITIONER	YT-1000L
11	TRIM	SUS304
10	INDICATOR	SUS304
9	STEM GUIDE	SS41
8	DIAPHRAGM	EPDM
7	SPRING	SWP
6	AIR CONNECTION	PT 1/4
5	UP STOPPER	SS41
4	DOWN STOPPER	SS41
3	DIAPHRAGM COVER	SS41
2	STEM NUT	SUS304
1	STEM	SUS304

# 2. DIMENSIONS

FLANGE CODE : JIS 10K RF

SIZE (MM)	A					B					C					D					E							
	L	H	E	H1	D	LIFT	SIZE (MM)	L	H	E	H1	D	LIFT	SIZE (MM)	L	H	E	H1	D	LIFT	SIZE (MM)	L	H	E	H1	D	LIFT	
15A	184	448	40	325	265		50A	254	486	78	325	265	25	80A	298	574	98	386	362	38	100A	352	660	113	386	362		
20A	184	448	50	325	265	15	65A	276	569	88	386	362		80A	298	574	98	386	362		100A	352	660	113	386	362		
25A	184	448	50	325	265		80A	298	574	98	386	362		100A	352	660	113	386	362									
40A	222	478	70	325	265	25	100A	352	660	113	386	362																

Designed by	Checked by	Approved by	File name	Date	Scale	Unit
PARK.D.G			CONTROL	2009.0508	N:S	mm

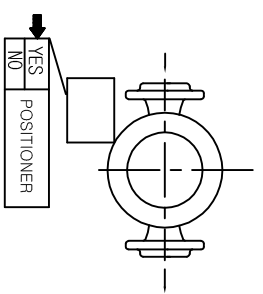
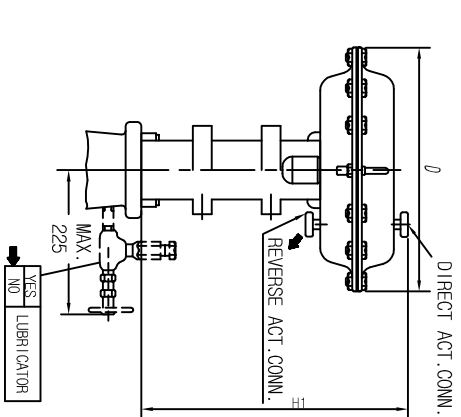
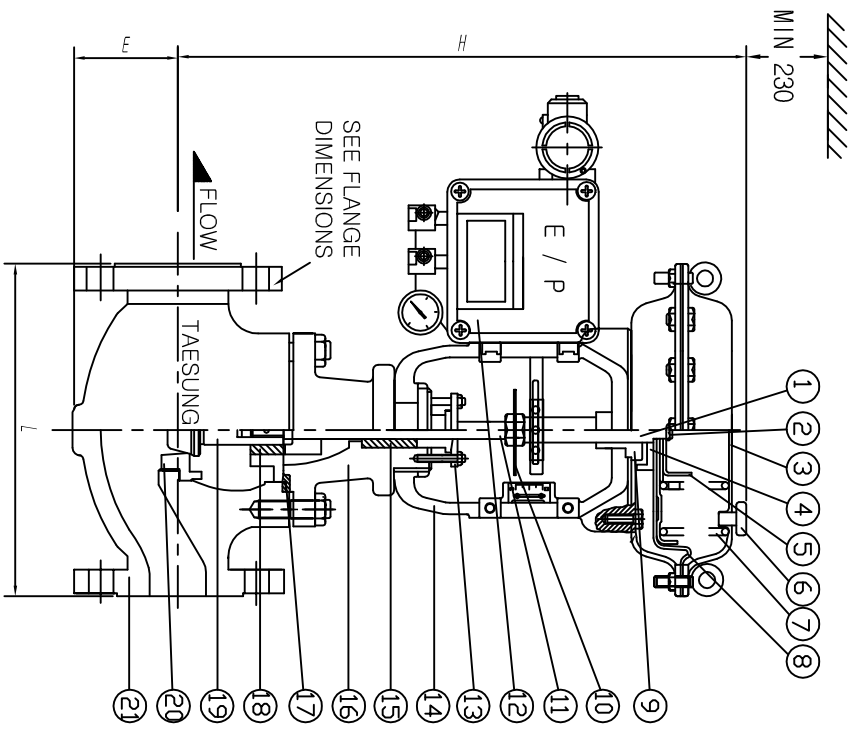


Title	PNEUMATIC DIAPHRAGM GLOBE SCPH2 CONTROL VALVE
Model	ACV
Drawing no.	TS090508-06

33-1

# 1. AIR FAILURE VALVE

FOR APPROVAL



STANDARD MOUNTING POSITION

# 3. PART NAME

21	BODY	SUS304
20	TREM	SUS316
19	PLUG	SUS316
18	GUIDE BUSHING	SUS420J2
17	GASKET	S.W.G
16	BONNET	SCS 13
15	PACKING	C#285
14	YOKE	FC20
13	PACKING FLANGE	SS41
12	POSITIONER	YT-1000L
11	TRIM	SUS304
10	INDICATOR	SUS304
9	STEM GUIDE	SS41
8	DIAPHRAGM	EPDM
7	SPRING	<b>SWP</b>
6	AIR CONNECTION	PT 1/4
5	UP STOPPER	SS41
4	DOWN STOPPER	SS41
3	DIAPHRAGM COVER	SS41
2	STEM NUT	SUS304
1	STEM	SUS304

# 2. DIMENSIONS

FLANGE CODE : JIS 20K RF

SIZE (MM)	L					LIFT	SIZE (MM)					LIFT	
	L	H	E	H1	D		L	H	E	H1	D		
15A	184	448	40	325	265	15	50A	254	486	78	325	265	25
20A	184	448	50	325	265		65A	276	569	88	386	362	38
25A	184	448	50	325	265	80A	298	574	98	386	362	38	
40A	222	478	70	325	265	100A	352	660	113	386	362		

Designed by	Checked by	Approved by	File name	Date	Scale	Unit
PARK.D.G			CONTROL	2009.0508	N:S	mm

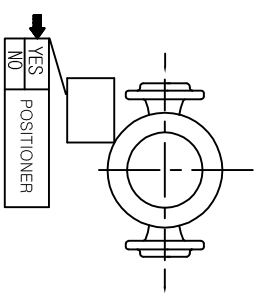
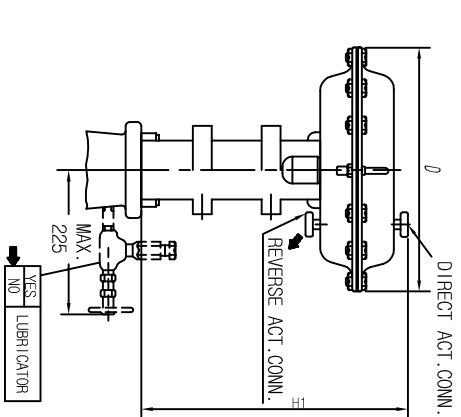
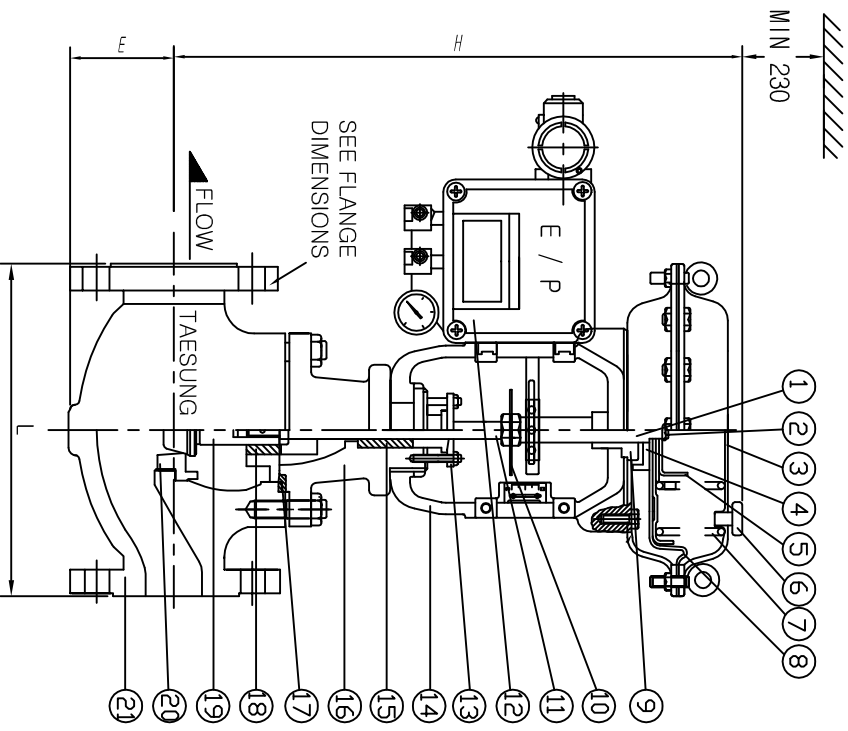


Title		Drawing no.	
PNEUMATIC DIAPHRAGM GLOBE, SUS304 CONTROL VALVE		TS090508-07	
Model	ACV		

33-2

# 1. AIR FAILURE VALVE

FOR APPROVAL



STANDARD MOUNTING POSITION

## 2. DIMENSIONS

FLANGE CODE : JIS 10K RF

SIZE (MM)	L					H					LIFT		
	L	H	E	H1	D	LIFT	SIZE (MM)	L	H	E		H1	D
15A	184	448	40	325	265	15	50A	254	486	78	325	265	25
20A	184	448	50	325	265		65A	276	569	88	386	362	38
25A	184	448	50	325	265	80A	298	574	98	386	362	38	
40A	222	478	70	325	265	100A	352	660	113	386	362		

## 3. PART NAME

21	BODY	SUS316
20	TREM	SUS316
19	PLUG	SUS316
18	GUIDE BUSHING	SUS420J2
17	GASKET	S.W.G
16	BONNET	SCS 13
15	PACKING	C#285
14	YOKE	FC20
13	PACKING FLANGE	SS41
12	POSITIONER	YT-1000L
11	TRIM	SUS304
10	INDICATOR	SUS304
9	STEM GUIDE	SS41
8	DIAPHRAGM	EPDM
7	SPRING	SWP
6	AIR CONNECTION	PT 1/4
5	UP STOPPER	SS41
4	DOWN STOPPER	SS41
3	DIAPHRAGM COVER	SS41
2	STEM NUT	SUS304
1	STEM	SUS304

Designed by	Checked by	Approved by	File name	Date	Scale	Unit
PARK.D.G		NO.	CONTROL	2009.0508	N:S	mm



Title	Model	Drawing no.
PNEUMATIC DIAPHRAGM GLOBE CONTROL VALVE	ACV	TS090508-08